

**THREE-YEAR RECIDIVISM ANALYSES
2007 RELEASES**

2007 Recidivism Rates	Females		Males		Total	
	N	%	N	%	N	%
New Offense						
Arrestment	193	53.0	1359	64.6	1552	62.9
Conviction	140	38.5	1004	47.7	1144	46.4
Incarceration	93	25.5	748	35.6	841	34.1
Technical Violation	25	6.9	145	6.9	170	6.9

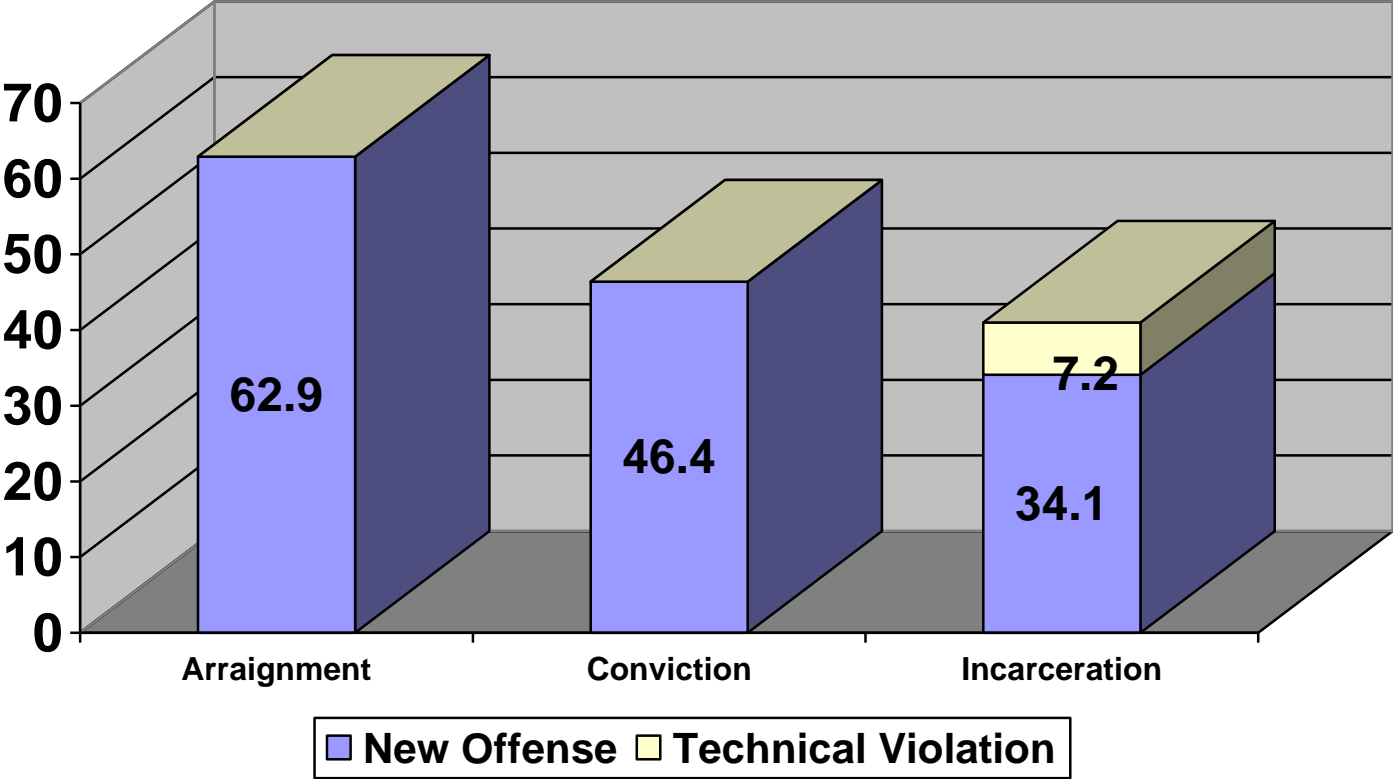
Men were more likely to be re-incarcerated for a new crime, than women. By the end of the third year post-release, 34.1% of offenders had been re-incarcerated for a new offense, and 6.9% for a technical violation of release conditions. The total re-incarceration rate was 41%. This is down from 45.2% in 2006.

Time to New Arrestment (% of Arrestments & Violation Hearings)

	First Year		Second Year		Third Year			
	N	%	N	%	N	%		
0-3 months	444	25.8	12-15 months	117	6.8	24-27 months	54	3.1
3-6 months	361	21.0	15-18 months	67	3.9	27-30 months	46	2.7
6-9 months	236	13.7	18-21 months	84	4.9	30-33 months	39	2.3
9-12 months	<u>167</u>	<u>9.7</u>	21-24 months	<u>70</u>	<u>4.1</u>	33-36 months	<u>37</u>	<u>2.1</u>
Year Totals	1208	70.2		338	19.7		176	10.2

70% of new arrestments occur in the first year post release, another 20% in the second year and 10% in the third year.

2007 Three-Year Recidivism Rates



Re-incarceration Rates by Classification & Year of Offense

	# Released	First Year*		Second Year		Third Year		Total	
		N	%	N	%	N	%	N	%
Day Reporting	310	64	20.6	30	9.7	8	2.6	102	32.9
Minimum/PRC	442	97	21.9	58	13.1	21	4.8	176	39.8
Community Reentry Unit	447	103	23.0	79	17.7	38	8.5	220	49.2
Medium/Maximum	856	235	27.5	100	11.7	56	6.5	391	45.7
WMCAC-Hampden	232	57	24.6	20	8.6	13	5.6	90	38.8

Rates of re-offending drop off significantly in the second year and third years post-release. Those released from the Community Reentry Unit had the highest overall incarceration rate, followed by the Main Institution.

Re-incarceration Rates by Classification & Return Type

	# Released	New Offense		Technical	
		N	%	N	%
Day Reporting	310	76	24.5	26	8.4
Minimum/PRC	442	140	31.7	36	8.1
Community Reentry Unit	447	219	49.0	1	0.2
Medium/Maximum	856	325	38.0	66	7.7
WMCAC-Hampden	232	76	28.4	24	10.3

Participants in Day Reporting and WMCAC commit significantly fewer new offenses that those released from all other security levels. Those released from WMCAC had the highest rate of technical violations.

Re-incarceration Rates by Release Type & Reason for Return	N	%
Wrapped (N=1869)		
Technical Violation of Probation	45	2.4
Technical Violation of Lifetime Supervision	6	0.3
New Offense	730	39.1
Total	781	41.8
Paroled (N=598)		
Technical Violation	119	19.9
New Offense on Parole	20	3.3
New Offense after Parole	91	15.2
Total	230	38.4

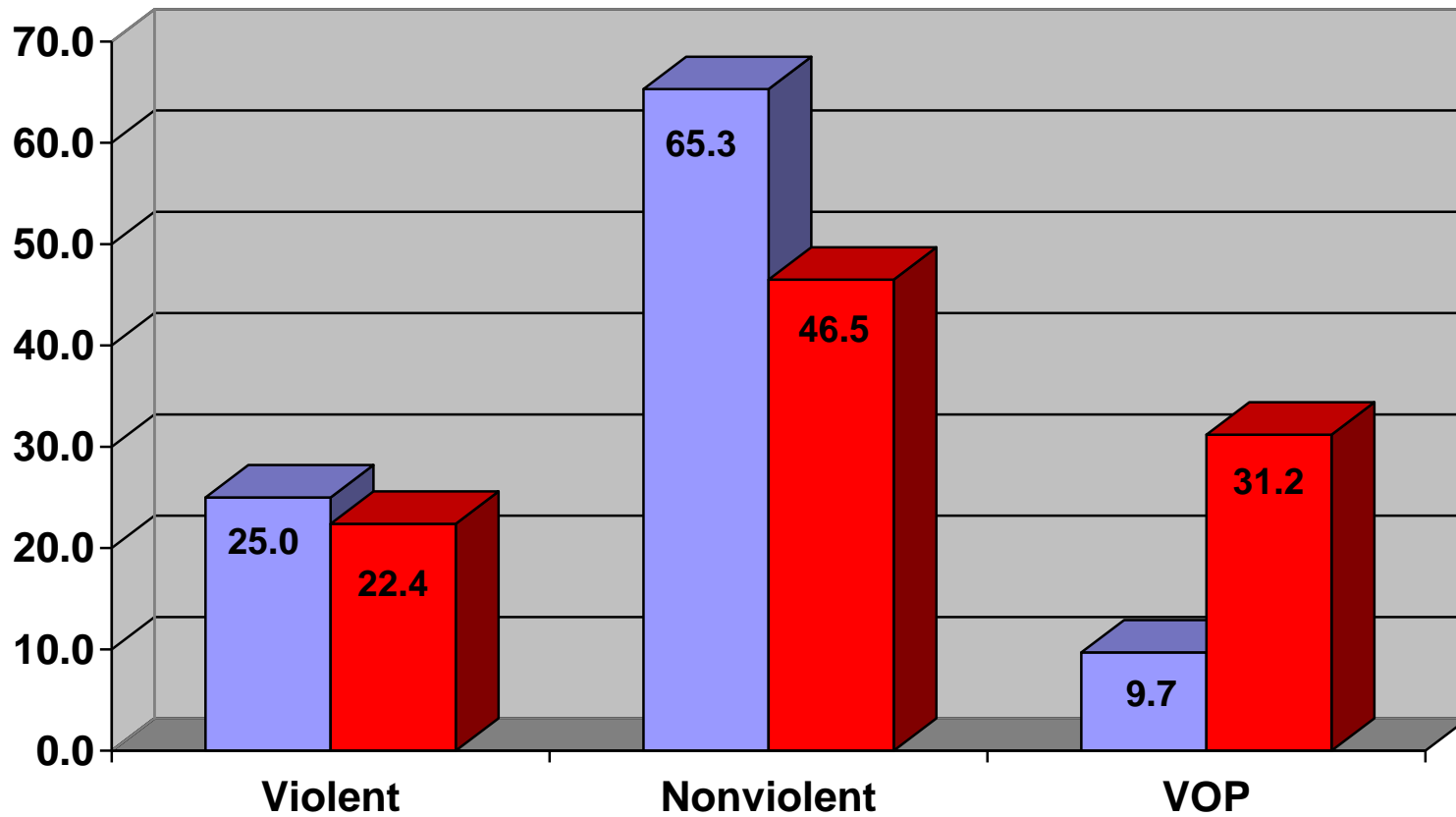
Only 18.5% of parolees committed a new offense compared to 39.1% of those who wrapped up their sentence.

New Arraignment Offense	Females		Males	
	N	%	N	%
Person	38	17.4	300	19.9
Domestic	2	0.9	39	2.6
Sex Offense	0	0.0	34	2.3
Firearms	2	0.9	16	1.1
Total Violent Offenses	42	19.2	389	25.9
Property	51	23.4	290	19.3
Drugs	30	13.8	251	16.7
Motor Vehicle	33	15.1	379	25.2
Prostitution	29	13.3	7	0.5
Others	6	2.8	49	3.3
Total Nonviolent Offenses	149	68.4	976	65.0
Parole Violation-Technical	17	7.8	98	6.5
Probation Violation-Technical	10	4.6	41	2.7
Technical Violations	27	12.4	139	9.2

New Incarceration Offense	Females		Males	
	N	%	N	%
Person	8	6.8	165	18.5
Domestic	1	0.8	28	3.1
Sex Offense	1	0.8	11	1.2
Firearms	2	1.7	10	1.1
Total Violent Offenses	12	10.1	214	23.9
Property	16	13.6	162	18.1
Drugs	16	13.6	168	18.8
Motor Vehicle	4	3.4	70	7.8
Prostitution	18	15.3	2	0.2
Others	1	0.8	13	1.5
Total Nonviolent Offenses	55	46.7	415	46.4
Parole Violation	17	14.4	114	12.8
Probation Violation	34	28.8	150	16.8
Violations of Release Conditions	51	43.2	264	29.6

Those arraigned for a violent offense were most likely to be incarcerated for that offense. This is especially true for men. A nonviolent offense, however, often resulted in a violation of parole or probation. Sixty-five percent of new arraignments were for nonviolent offenses, but less than 50% of new incarcerations. Violations represented less than 10% of arraignments, but over 30% of incarcerations.

Arrestment & Incarceration Offenses



■ Arrestment Offense ■ Incarceration Offense